

# 2009

## Green Jobs & Energy Market Trends

*Relevant Trends, Opportunities, Projections & Resources*



*Commissioned by the New England Clean Energy Council  
for the 2009 Energy Efficiency Workforce Needs Study*



MARKET TRENDS

SALARY & EXPERIENCE

JOB TITLES & RESOURCES

### New England Region

Massachusetts

Rhode Island

© 2009 Association of Energy Engineers



PRESENTED BY THE ASSOCIATION OF ENERGY ENGINEERS

## Green Jobs and Market Trends: AEE Survey of the Energy Industry 2009

Seventy-nine (79%) percent of the national survey respondents are Certified in one or more of the following categories:

1. Certified Energy Manager (CEM®)
2. Energy Manager in Training (EMIT®)
3. Certified Sustainable Development Professional (CSDP®)
4. Certified Green Building Engineer (GBE®)
5. Business Energy Professional (BEP®)
6. Certified Lighting Efficiency Professional (CLEP®)
7. Certified Power Quality Professional (CPQ®)
8. Certified Building Commissioning Professional (CBCP®)
9. Distributed Generation Certified Professional (DGCP®)
10. Certified Measurement and Verification Professional (CMVP)
11. Certified Demand-Side Measurement Professional (CDSM®)
12. Certified Cogeneration Professional (CCP®)
13. Certified Energy Procurement Professional (CEP®)
14. Certified Indoor Air Quality Professional in Training (CIAQT®)
15. Certified Testing, Adjusting Balancing Professional (CTAB®)
16. Certified Geo-Exchange Designer (CGD®)
17. Certified Carbon Reduction Manager (CRM®)

[www.aeecenter.org/certification](http://www.aeecenter.org/certification)



## Green Jobs: AEE Survey of the Energy Industry 2009

The Association of Energy Engineers (AEE), a nonprofit professional society of over 9,500 members, issued a survey to its members to determine state of the energy industry, technology trends, as well as policy and market trends. The results from this 35 page report are based on 278 responses from the New England area. AEE was founded in 1977 and its mission is *“to promote the scientific and educational interests of those engaged in the energy industry and to foster action for sustainable development.”*

### Fast Fact – Respondent Profile

- Ninety-two percent (92%) have graduated from a four-year accredited college.
- Forty-seven percent (47%) have a post-graduate degree from an accredited college.
- Thirty-seven percent (37%) are registered Professional Engineers (P.E.s) or Architects.

# Section I: Salary survey

There is a growing demand for energy efficiency, green collar and renewable energy professionals in light of the following trends:

## Survey Results

- Thirty-nine percent (39%) have a salary between \$70,000 - \$100,000
- Thirty-six percent (36%) of the energy professionals who were surveyed plan to retire in the next ten years.
- Seventy-three percent (73%) of energy professionals indicate a heightened shortage of qualified professionals in the energy efficiency and renewable energy fields in the next five years.
- Seventy percent (70%) of energy professionals indicate a need for national and state training for "Green Jobs" to address job shortages that are impairing growth in green industries, such as energy efficient buildings and construction, renewables, electric power, smart grid, energy efficient vehicles and biofuels development.

1. Do you plan to retire within the next five years?

	Total	Percentage
Yes	36	13.6%
No	228	86.4%
	264	100.0%

2. Do you plan to retire within the next ten years?

	Total	Percentage
Yes	91	35.5%
No	165	64.5%
	256	100.0%

3. Do you feel that there will be a shortage of qualified professionals in the energy efficiency and renewable energy field within the next five years?

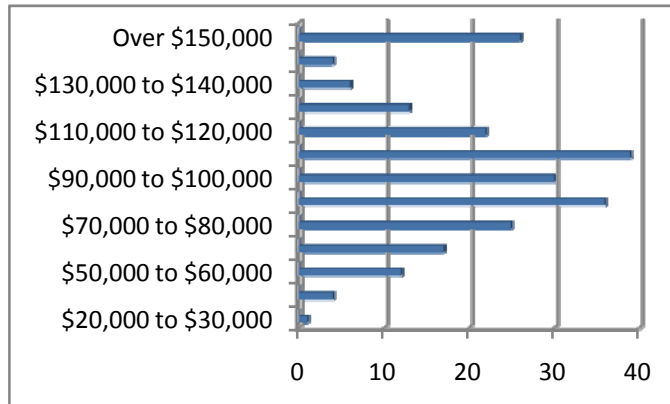
	Total	Percentage
Yes	195	72.8%
No	73	27.2%
	268	100.0%

4. Is there a need for national and state training for “Green Jobs” to address job shortages that are impairing growth in green industries, such as energy efficient buildings and construction, renewable electric power, energy efficient vehicles and biofuels development?

	Total	Percentage
Yes	184	70.0%
No	79	30.0%
	263	100.0%

5. Please input your base salary as of January 2, 2009.

	Total	Percentage
\$20,000 to \$30,000	1	0.4%
\$40,000 to \$50,000	4	1.7%
\$50,000 to \$60,000	12	5.1%
\$60,000 to \$70,000	17	7.2%
\$70,000 to \$80,000	25	10.6%
\$80,000 to \$90,000	36	15.3%
\$90,000 to \$100,000	30	12.8%
\$100,000 to \$110,000	39	16.6%
\$110,000 to \$120,000	22	9.4%
\$120,000 to \$130,000	13	5.5%
\$130,000 to \$140,000	6	2.6%
\$140,000 to \$150,000	4	1.7%
Over \$150,000	26	11.1%
	235	100.0%



6. Please indicate the bonus you received last year.

	Total	Percentage
\$1 to \$1,000	143	51.8%
\$1,001 to \$5,000	40	14.5%
\$5001 to \$10,000	32	11.6%
\$10,001 to \$20,000	17	6.2%
\$20,001 to \$30,000	20	7.2%
\$30,001 to \$40,000	7	2.5%
\$40,001 to \$50,000	5	1.8%
Over \$50,000	12	4.3%
	276	100.0%

7. Since you have assumed energy management responsibilities at your company, are you receiving significantly higher compensation than before?

	Total	Percentage
Yes	54	24.8%
No	164	75.2%
	218	100.0%

8. Since you have assumed energy management responsibilities at your company, are you receiving higher visibility?

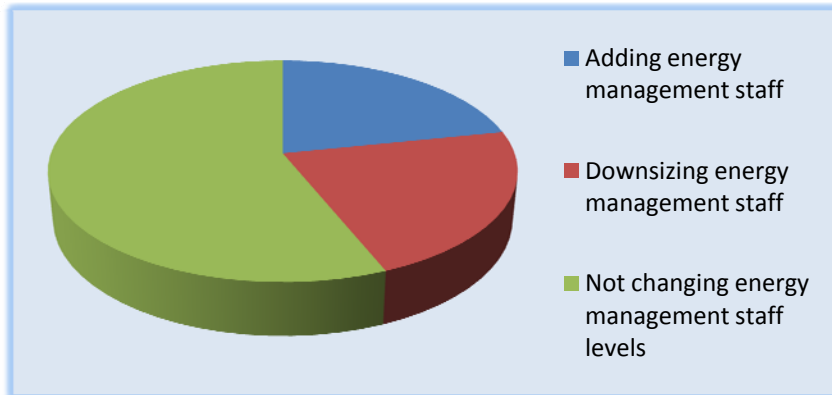
	Total	Percentage
Yes	134	61.5%
No	84	38.5%
	218	100.0%

9. Since you have assumed energy management responsibilities at your company, are you in a better position for advancement?

	Total	Percentage
Yes	104	47.9%
No	113	52.1%
	217	100.0%

10. Is your company currently:

	Total	Percentage
Adding energy Management staff	60	21.7%
Downsizing energy management staff	61	22.1%
Not changing energy management staff levels	155	56.2%
	276	100.0%



11. Please identify the location where you are employed?

	Total	Percentage
AEE Region I (CT, MA, ME, NJ, NY, PA, RI, VT)	276	100%

## Section II: Experience & Credentials

12. Are you a graduate from a 4-year accredited college?

	Total	Percentage
Yes	230	92.4%
No	19	7.6%
	249	100.0%

13. Do you have a post-graduate degree from an accredited college?

	Total	Percentage
Yes	115	46.9%
No	130	53.1%
	245	100.0%

21. Are you a registered Professional Engineer or Registered Architect?

	Total	Percentage
Yes	89	36.6%
No	154	63.4%
	243	100.0%

14. Do you hold a valid certification from AEE? (CEM, EMIT, CLEP, CPQ, CBCP, DGCP, CMVP, CDSM, CCP, CEP, CIAQP, CIAQT, CTAB, CGD, BEP, CSDP, GBE, CRM or CEA)?

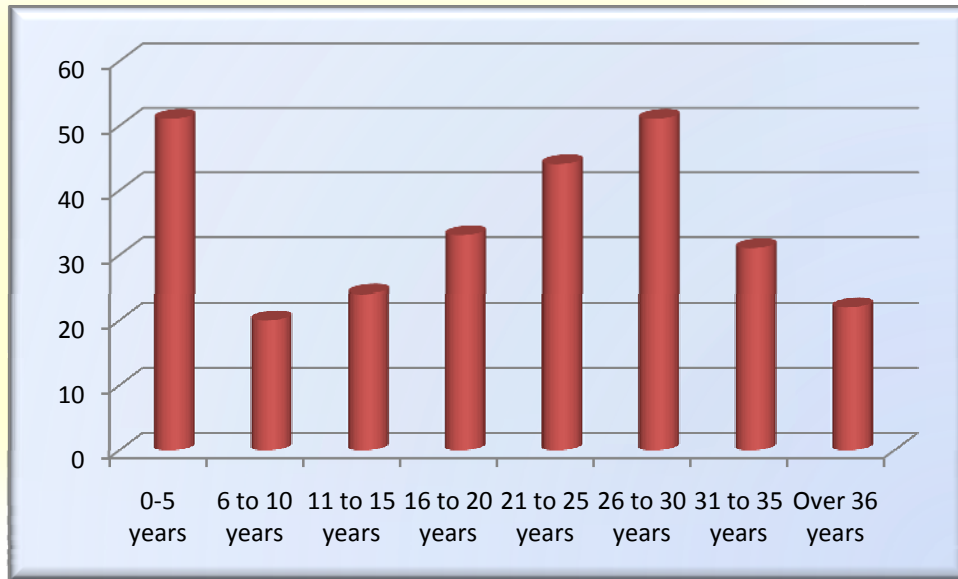
	Total	Percentage
Yes	188	76.4%
No	58	23.6%
	246	100.0%

15. If yes to previous question, how many AEE Certifications do you hold?

	Total	Percentage
1-2	238	86.2%
3-5	35	12.7%
Above 5	3	1.1%
	276	100.0%

16. How many years of experience do you have?

	Total	Percentage
0-5 years	51	18.5%
6 to 10 years	20	7.2%
11 to 15 years	24	8.7%
16 to 20 years	33	12.0%
21 to 25 years	44	15.9%
26 to 30 years	51	18.5%
31 to 35 years	31	11.2%
Over 36 years	22	8.0%
	276	100.0%



17. How many of those years have you been involved in energy management?

	Total	Percentage
0-5 years	107	38.77%
6 to 10 years	37	13.41%
11 to 15 years	40	14.49%
16 to 20 years	30	10.87%
21 to 25 years	28	10.14%
26 to 30 years	23	8.33%
31 to 35 years	7	2.54%
Over 36 years	4	1.45%
	276	100.00%

18. How many years have you been a member of the Association of Energy Engineers?

	Total	Percentage
1-5 years	160	57.97%
6 to 10 years	50	18.12%
11 to 15 years	33	11.96%
16 to 20 years	24	8.70%
21 to 25 years	7	2.54%
Over 25 years	2	0.72%
	276	100.0%

19. Please indicate your company's policy towards conferences and expositions.

	Total	Percentage
Same funds	109	42.58%
Less funds	133	51.95%
More funds	14	5.47%
	256	100.00%

20. Please indicate your company's policy towards seminars.

	Total	Percentage
Same funds	125	48.6%
Less funds	122	47.5%
More funds	10	3.9%
	257	100.0%

21. Which factor most influences your decision to attend a conference and exposition?

	Total	Percentage
Cost	49	19.2%
Location	51	20.0%
Subject	155	60.8%
	255	100.0%

22. Educational seminars are more valuable than a conference and exposition.

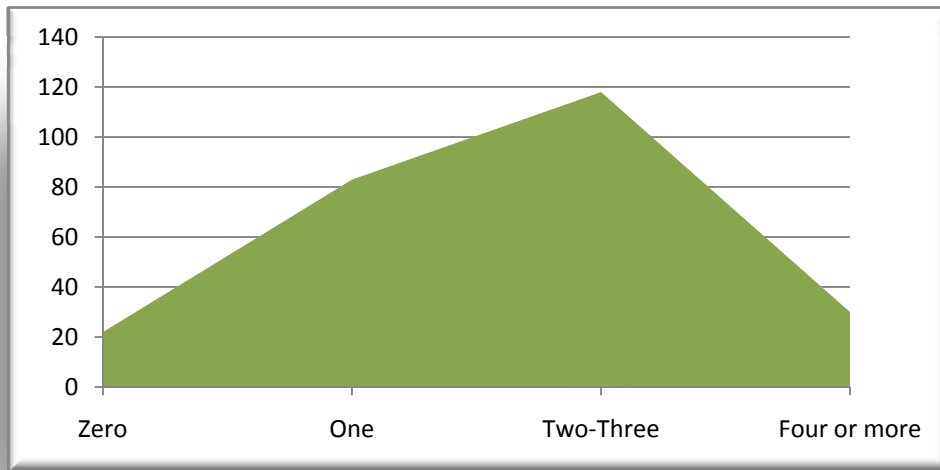
	Total	Percentage
Agree	158	61.5%
Disagree	38	14.8%
No opinion	61	23.7%
	257	100.0%

23. How many conferences and expositions does your company allow you to attend each year?

	Total	Percentage
Zero	37	14.7%
One	86	34.1%
Two-Three	107	42.5%
Four or more	22	8.7%
	252	100.0%

24. How many seminars does your company allow you to attend each year?

	Total	Percentage
Zero	22	8.7%
One	83	32.8%
Two-Three	118	46.6%
Four or more	30	11.9%
	253	



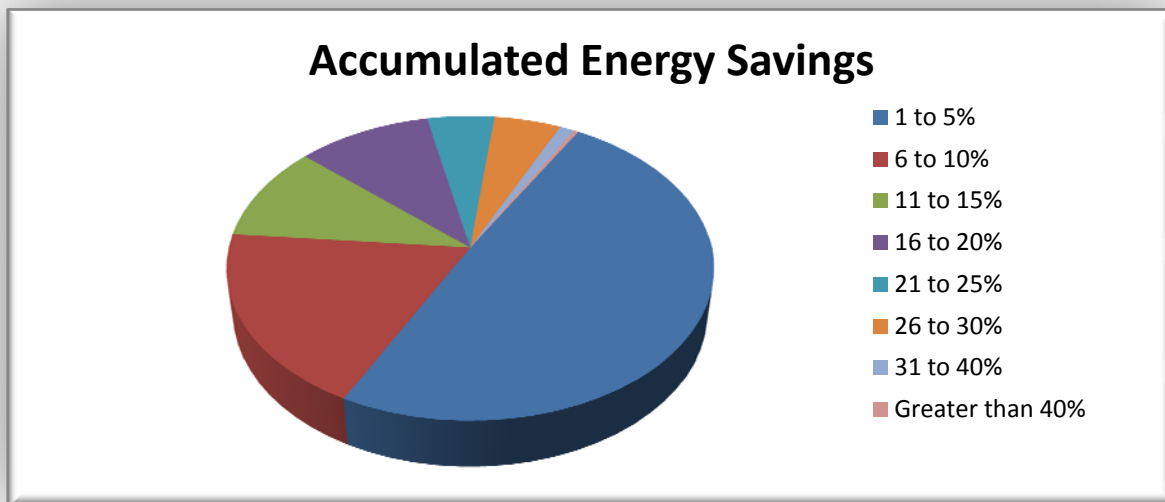
## Section III: Market Trends

25. The adoption of energy efficient technologies must be a major part of a national energy policy in order to achieve energy independence.

	Total	Percentage
Agree	268	97.5%
Disagree	7	2.5%
	275	100.0%

26. If you are an energy user, what are the estimated accumulated energy savings that your company has made since the program began?

	Total	Percentage
1 to 5%	136	49.3%
6 to 10%	52	18.8%
11 to 15%	28	10.1%
16 to 20%	28	10.1%
21 to 25%	14	5.1%
26 to 30%	14	5.1%
31 to 40%	3	1.1%
Greater than 40%	1	0.4%
	276	100.0%



27. If you are an energy user, what is the estimated total accumulated energy cost reduction since the energy reduction program began?

	Total	Percentage
Less than \$1 million	207	75.0%
\$1 to 5 million	45	16.3%
\$5 to 10 million	9	3.3%
Greater than \$10 million	15	5.4%
	276	100.0%

28. If you are an end user, has your company used an energy service company to implement energy projects?

	Total	Percentage
Yes	99	43.2%
No	130	56.8%
	229	100.0%

29. If you are an end user, does your company plan to use an energy service company to implement energy projects in the future?

	Total	Percentage
Yes	113	50.0%
No	113	50.0%
	226	100.0%

30. In what year did your company/organization begin an energy management program?

	Total	Percentage
Prior to 1970	53	19.2%
1971 TO 1974	13	4.7%
1975 to 1980	23	8.3%
1981 to 1985	15	5.4%
1986 to 1990	18	6.5%
1991 to 1995	26	9.4%
1996 to 2000	26	9.4%
Since 2001	102	37.0%
	276	100.0%

31. With the recent increase in energy costs, what has happened to the level of interest shown by you and by your upper management?

	Total	Percentage
Stayed relatively the same	36	13.0%
Increased	59	21.4%
Notably Increased	180	65.2%
Decreased	1	0.4%
	276	100.0%

## Section IV: Information & Resources

The [American Recovery and Reinvestment Act of 2009 \(ARRA\)](#) will fund:

### A) Energy Efficiency

- \$3.1 billion for State Energy Programs which will encourage states to improve building energy improvement and retrofits.
- \$5 billion for weatherization of low income housing.
- \$4.5 billion for Green Federal Buildings.
- \$3.6 billion for the Department of Defense for energy efficient projects and facilities upgrade.
- \$3.2 billion for Energy Efficiency and Conservation Block Grants to help state and local governments implement energy efficiency.
- \$500 million dollars for job training, and programs to prepare individuals for careers in energy efficiency and renewable energy.

*According to the **Alliance to Save Energy**, the energy efficiency measures will create 100,000 or more new energy jobs in the next two years.*  
[www.ase.org](http://www.ase.org)

### B) Solar Energy

The American Recovery and Reinvestment Act contains provisions for:

- **Renewable Energy Grant Program:** Offers Department of Energy grants equal to thirty percent (30%) of the cost of solar projects started in the next two years, including large-scale utility projects. This is a critical alternative to solar tax credits that are not functioning as Congress intended in the current economic climate.

- **Loan Guarantee Program:** Creates a new, streamlined loan guarantee program to support financing of renewable energy systems, including solar energy technology.
- **Manufacturing Investment Credit:** Creates a thirty percent (30%) investment tax credit for facilities engaged in the manufacture of renewable energy property or equipment.

*According to the Solar Energy Industries Association a total of 119,000 jobs over the next two years will be created for solar panel installation, manufacturing components and solar power plant construction.*

*www.seia.org*

### C) Smart Grid/Advanced Battery/Energy Efficiency:

- \$30 billion will be provided for such initiatives as a new, smart power grid, advanced battery technology, and energy efficiency measures. According to the fact sheet, 500,000 energy jobs will be created. **Source:** [Fact Sheet of Speaker Nancy Pelosi](#) – Wall Street Journal

### D) Growing Energy Market

- The revenue for the energy management services market in North America in 2008 was \$20.35 billion (USD) and is projected to double to over \$40 billion (USD) by 2013 due to favorable new government legislations and increased knowledge about the benefits of energy management. **Source:** [Frost & Sullivan](#)

## Employment Opportunities & Papers

The Association of Energy Engineers maintains a career web site detailing energy, green, sustainable and power positions and jobs available as well as a resume databank with individuals seeking employment. Details are indicated at <http://www.aeecenter.org/jobs>

There is also access to an energy industry dictionary of terms, free access to energy – green white papers, industry news portal, as well as professional reference books. <http://www.energyvortex.com>

## Training Opportunities

The Association of Energy Engineers offers a variety of professional training and re-training programs including:

- Training Seminars, Conferences & Industry Networking (Energy, Sustainability, Energy Auditing, Power, Green Facilities, Certification Programs)
  - [www.aeecenter.org/realtime](http://www.aeecenter.org/realtime) (Online training seminars)
  - <https://www.aeecenter.org/seminars/calendar.htm> (Live seminar training)
  - [www.aeecenter.org/shows](http://www.aeecenter.org/shows) (Energy Industry Conferences & Networking Events)

There are currently many “green collar” jobs which exist in the current marketplace. The job titles listed below are typical energy, sustainable, green, environmental and industry jobs based on the actual survey responses of AEE members and participants of AEE programs. These are some of the hot growth areas for professional entering or transitioning into the energy – green field.

**A**

Account Manager/Executive	Application Engineer/Technician
Account Manager – Building Automation Systems Sales	Architect
Advisor for Management and Energy	Auditor
Agency Energy and Environmental Manager	Automated Controls Technician

**B**

Building Automation Systems Engineer	Building Services Engineer
Building Consultant/Engineer	Business Development Manager
Building Control Specialist	Business Services Engineer
Building Energy Engineer	Business Unit Energy Services
Building Energy Analyst	

**C**

Campus Energy Manager	Civil Engineer
Carbon Consultant	Climate Change Consultant
Carbon Reduction Manager	Climate Initiative Program Director
Central Plant Engineering Manager	Cogeneration Manager
Certified Energy Manager	Command Utility Energy Engineer
Certified Geothermal Designer	Commercial Engineering Manager
Chief of Energy Engineering	Commercial and Industrial Energy Services Engineer
Certified Energy Auditor	Commercial Energy Management Consultant
Chief Operations and Maintenance	
Chiller Team Manager	

Commissioning Manager	Coordinator of Infrastructure
Commissioning Engineer	Coordinator of Energy Management
Commissioning Technician	Coordinator of Residential Energy Programs
Commercial/Industrial Services Manager	Corporate Director Engineering and Construction
Compressed Air Specialist	Corporate Director of Energy Management
Conservation Engineer	Corporate Director of Energy and Environmental Services
Conservation Program Engineer	Corporate Director Plant Operations
Construction Manager	Corporate Energy Coordinator
Construction Manager/Designer	Corporate Energy Director
Construction Project Manager	Corporate Energy Management Leader
Construction Services Manager	Corporate Energy Manager
Construction/Facilities Manager	Corporate Facilities/Energy manager
Consultant	Corporate Facilities Manager
Consulting Engineer	Corporate Facilities Engineer
Controls and Commissioning Manager	Corporate Manager of Building Operations
Controls and Energy	Corporate Project Manager
Controls Engineer	Corporate Utilities Manager
Controls Manager	
Controls Specialist	
Coordinator of Environmental Services	

**D**

Design Engineer	Distributed Energy Manager
Design Build/Energy Engineer	Distribution Standards Engineer
Design Manager	Demand-Side Management Coordinator
Design/Energy Engineer	Demand-Side Management Engineer
Development Engineer	Demand-Side Management P&E Specialist

Demand-Side Management Program

Consultant

**E**

Electric Engineering Officer

Energy & Utilities Manager

Electric Meter Relay Technician

Energy & Water Resource Planner

Electric Utility Analyst

Energy Advisor

Electric Utility Project Coordinator

Energy Analyst

Electrical & Energy Manager

Energy Auditor

Electrical & Instrument Engineer

Energy Balance Engineering

Electrical and Controls Engineer

Energy Conservation Advisor

Electrical and Mechanical Engineer

Energy Conservation Analyst

Electrical Consultant Engineer

Energy Conservation Consultant

Electrical Coordinator

Energy Conservation Coordinator

Electrical Design Engineer

Energy Conservation Engineer

Electrical Designer

Energy Conservation Manager

Electrical and Automation Engineer

Energy Conservation Program Manager

Electrical Engineer

Energy Conservation Technical  
Specialist

Energy Engineer

Energy Coordinator

Energy Manager

Energy Education Specialist

Energy & Sustainability Program  
Manager

Energy Efficiency Program  
Director/Engineer

Energy & Commissioning Engineer

Energy Efficiency Consultant

Energy & Environment Engineer

Energy Efficiency Coordinator

Energy & Environmental Consultant

Energy Efficiency Engineer

Energy & Environmental Manager

Energy Efficiency Program Manager

Energy & Sustainability Solutions  
Specialist

Energy Efficiency Specialist

Energy Efficiency Technician Instructor	Energy Sales Consultant
Energy Facility Manager	Energy Scientist
Energy Information Manager	Energy Service Engineer
Energy Management Analyst	Energy Service Manager
Energy Management Consultant	Energy Service Specialist
Energy Management Engineer	Energy Services Account Executive
Energy Management Quality Consultant	Energy Services Advisor
Energy Management Representative	Energy Services Analyst
Energy Management Specialist	Energy Services Coordinator
Energy Management/Environmental System Consultant	Energy Services Program Consultant
Energy Manager	Energy Services Project Developer
Energy Performance Analyst	Energy Services Project Manager
Energy Plant Manager	Energy Services Representative
Energy Procurement Manager	Energy Services Specialist
Energy Program Coordinator	Energy Services Supervisor
Energy Program Engineer	Energy Solutions Analyst
Energy Program Manager	Energy Solutions Consultant
Energy Program Specialist	Energy Solutions Manager
Energy Programming Technician	Energy Specialist
Energy Project Development	Energy Supply Manager
Energy Project Engineer	Energy Systems Engineer
Energy Project Manager	Energy Technician
Energy Projects Specialist	Energy Trader
Energy Resource Conservation Specialist	Energy/Environmental Consultant
Energy Resource Manager	Energy/Mechanical Manager
	Energy/Resource Conservation Program Manager

Energy/Utilities Engineer  
Energy/Utilities Manager  
Engineer  
Engineering & Environmental Services  
Engineering Analyst  
Engineering and Design Supervisor  
Engineering Consultant  
Engineering Development Director  
Engineering Director  
Engineering Manager  
Engineering Specialist  
Engineering Technician  
Engineer – Load Management

Environmental Health, Safety & Security  
Manager  
Environmental Solutions Manager  
Environmental & Utilities Manager  
Environmental & Energy Manager  
Environmental Consultant  
Environmental Director  
Environmental Engineer  
Environmental Health & Safety Mgr.  
Environmental Manager  
Environmental Program Manager  
Environmental Project Manager  
Environmental Specialist  
Equipment Engineer

## F

Facilities & Compliance Analyst  
Facilities & Maintenance Manager  
Facilities and Construction Manager  
Facilities Consultant  
Facilities Coordinator  
Facilities Design & Construction  
Supervisor  
Facilities Design Engineer  
Facilities Electrical Engineer  
Facilities Electrical Systems Coordinator  
Facilities Energy Engineer  
Facilities Engineer

Facilities Environmental Manager  
Facilities HVAC Engineer  
Facilities Manager  
Facilities Operations Manager  
Facilities Performance Analyst  
Facilities Plant Engineer  
Facilities Project Manager  
Facilities Systems Specialist  
Facility Energy Conservation Manager  
Field Engineer  
Fuel Analyst

## G

Gas & Energy Coordinator  
Gas Management Service Analyst  
Gas Supply & Technology Engineer  
General Engineer  
Geo-Exchange Designer  
Geothermal Operations Manager  
Geothermal Designer  
Global Commodity Manager-Energy  
Global Director Energy & Sustainability  
Global Director – Energy & Plant Services

Global Energy & Climate Change Program  
Global Energy Director  
Global Energy Manager  
Global Energy Program Manager  
Global Energy Solutions Manager  
Global Environmental Engineer  
Global Energy Manager  
Green Building Engineer  
Greenhouse Gas Lead Assessor

## H

Health and Safety Manager  
Health, Safety, and Environmental Manager  
HVAC Design Engineer  
HVAC Designer  
HVAC Engineer

HVAC Facilities Manager  
HVAC Services Manager  
HVAC Systems Engineer  
HVAC Technician  
Hydro Geologist

## I

Indoor Environmental Consultant  
Industrial Engineer  
Industrial Gas Engineer  
Infrastructure Engineer

Installation Energy Manager  
Installation Manager  
Intelligent Building Specialist

**L**

LEED AP

Lighting Design Specialist

LEED Performance Assurance Engineer

Lighting Engineer

Lighting Consultant

Load Analyst

**M**

Maintenance Engineer

Mechanical Designer

Maintenance Manager

Mechanical Engineer

Maintenance Planner

Mechanical Operations Manager

Manager of Energy Initiatives

Mechanical Project Engineer

Measurement & Verification Engineer

Mechanical Systems Engineer

Measurement & Verification Specialist

Mechanical Utilities Engineer

Mechanical Design Engineer

**N**

National Energy Manager

National Energy Solutions Specialist

National Energy Services Manager

**O**

Operations & Energy Manager

Operations Engineer

Operations & Maintenance Engineer

Operations Manager

Operations Analyst

**P**

Performance Assurance Consultant

Performance Assurance Specialist

Performance Assurance Engineer

Performance Contract Engineer

Performance Contracting Energy Engineer  
Performance Engineer  
Performance Manager  
Plant Engineer  
Plant Manager  
Pollution Prevention Engineer  
Power Application Engineer  
Power Management Applications Engineer  
Power Optimization Engineer  
Power Plant Manager  
Power Quality Engineer  
Power Quality Specialist  
Power Resources Manager  
Power Systems Engineer  
Power Utilization Engineer  
Power, Energy & Environmental Market Manager  
Procurement Analyst  
Procurement Manager (Electric & Gas)  
Product Manager  
Product Manager – Energy

Production Engineer  
Professional Engineer  
Program Analyst  
Program Director  
Program Director - Energy  
Program Manager  
Program Manager – Corporate Energy Services  
Program Manager – Energy Services  
Program Manager – Renewable Energy  
Project Analyst  
Project Coordinator  
Project Development Engineer  
Project Developer  
Project Director  
Project Energy Engineer  
Project Energy Manager  
Project Engineer  
Project Manager  
Purchasing Director  
Purchasing Manager  
Purchasing Specialist

## Q

Quality Control Manager

Quality Engineer

## R

Refrigeration Engineer

Reliability Engineer

Renewable Energy Business Manager

Renewable Energy Consultant

Resource Conservation Engineer

Resource Conservation Manager

Resource Efficiency Manager

Retro-commissioning Engineer

## S

Safety & Environmental Coordinator

Shipboard Resource Efficiency Manager

Smart Grid Engineer

Solar Energy Engineer

Solar Energy Systems Designer

Solution Design Specialist

Solution Development Engineer

Staff Engineer

Staff Research Engineer

State Energy Manager

Storm water Planning & Engineer  
Supervisor

Strategic Energy Analyst

Surveillance Coordinator, Work Control

Sustainable Development Professional

Sustainability Coordinator

Sustainability Engineer

Sustainability Leader

Sustainability Manager

Sustainable Building Analyst

Sustainable Building Technologist

Sustainable Design Specialist

Sustainable Development Coordinator

Sustainable Solutions Engineer

System Applications Engineer

System Control Operator

Systems Analyst

Systems Engineer

## T

Technical Advisor  
Technical Analyst  
Technical Consultant  
Technical Director  
Technical Engineer  
Technical Facilities Assistant  
Technical Manager  
Technical Solutions Engineer  
Technical Specialist  
Test and Balance Engineer

## U

Utilities and Energy Director  
Utilities Engineer  
Utilities Manager  
Utility Analyst  
Utility Conservation Representative

## W

Waste Reduction Consultant  
Wastewater Engineer  
Water & Energy Management Specialist  
Wind Power Engineer

## Massachusetts & Rhode Island Employers & Job Titles

Company	Title	State	City
80 Congress Street Properties, LLC		MA	Wilbraham
ABM Engineering Services	Engineer	MA	Lexington
Acer Energy	President	MA	Hanover
Acres Company Inc	President	MA	South Hadley
Acushnet Company	Sr. Facilities Systems Engineer	MA	Fairhaven
Adamian Energy Solutions, LLC	President	MA	Cambridge
AECOM Energy	Associate Vice President	MA	Walpole
Aerial Spectrum, Inc.	President	MA	Westford
Air Care Technology Inc.	President	MA	Franklin
Alliance to Save Energy	Program Assc., Int'l	MA	Quincy
Ameresco	Director-Project Development	MA	Framingham
Ameresco	Energy Auditor	MA	Framingham
Ameresco	Energy Engineer	MA	Framingham
Ameresco	Program Manager	MA	Framingham
Ameresco Inc.	Senior Project Manager	MA	Framingham
Ameresco, Inc		MA	Cambridge
Ameresco, Inc.	Director of Project Development	MA	Framingham
Ameresco, Inc.	Project Manager	MA	Framingham
Ameresco, Inc.	Project Manager	MA	Framingham
Ameresco, Inc.	Marketing Manager	MA	Framingham
Ameresco, Inc.	Vice President	MA	Framingham
American Energy Systems	Vice President Engineering R/D	MA	Stow
Anchor Insulation Company	Vice President	RI	Pawtucket
Apple Creek		MA	Ipswich
Applied Resources Inc		MA	Medford
Aqua Maine, Greenville Division	Superintendent	MA	Greenville
Aramark	Senior Energy Manager	MA	Fiskdale
Aramark/Olin College of Engineering	Energy Manager	MA	Needham
Aramark	Energy Manager	MA	Scituate
Arthur Orenberg Associates Inc		MA	Lexington
AstraZeneca	Sr. Manager, Facilities Maintenance & Operations	MA	Waltham
AstraZeneca	Facilities Systems Specialist	MA	Waltham
B2Q Associates Inc.	Principal	MA	Beverly
Babcock Power, Inc.		MA	Charlton City
BAE Systems	Manager, Lexington Plant Engineering	MA	Lexington
Bard, Rao + Athanas Consulting Engineers, LLC	Associate & Senior Mechanical Engineer	MA	Waltham

Barstow Engineering, Inc.	President & Treasurer	MA	BOSTON
Bay State Gas Co	Manager, Demand Side Management	MA	Westborough
Bay State Gas Company	Commercial Field Sales Representative	MA	Brockton
BCM Controls Corp.	Software Engineer	MA	Woburn
Belmont Engineering Inc		MA	Belmont
Bentley College	Asst. Director Finance & Admin., Facilities Mgmt.	MA	Waltham
Bentley University	Manager of Life Safety Services	MA	Waltham
Beth Israel Hospital Med Ctr.	Utilities Manager	MA	Boston
Big Y Foods Inc	Energy Management Specialist	MA	Wilbraham
Big Y Foods, Inc.	EnergyUtility Manager	MA	Springfield
Biogen Idec Inc.	Plant Engineer	MA	Cambridge
Biopure Corporation	Director of Facilities Engineering	MA	Cambridge
Bluestone Energy Services	Project Engineer	MA	Norwell
Bluestone Energy Services Inc		MA	Norwell
Boston College	Assistant Director of Enigneering Services	MA	Chestnut Hill
Boston Properties	Director Engineering	MA	Boston
Boston University Medical Center	Energy Manager	MA	Boston
Braintree Electric Light Dept.	Energy Services Manager	MA	Braintree
Bridgewater State College	Asst. Director Facilities	MA	Marion
Brown University	AVP, Facilities Operations and Engineering	RI	Providence
BU Energy Club		MA	Boston
Building Doctor Inc.	Managing Director	MA	Brighton
Cambridge Energy Services Inc	President	MA	Sharon
Camp Dresser & McKee	Senior Electrical Engineer	MA	Cambridge
Canco Group	Carbon Consultant	MA	Medford
Cannon Design	Mechanical Engineer	MA	Boston
Cannon Design	Principal	MA	Boston
Cannon Design	Mechanical Engineer	MA	Magnolia
Cape Cod Hospital	Director of Engineering	MA	Hyannis
Capitol Engineering Co.	President	MA	Newton
Capitol Engineering Company	President	MA	Newton
CB Richard Ellis	Operations Manager	MA	Boston
CB Richard Ellis, Inc	Energy and Corporate Sustainability Manager	MA	Saugus
Charles River Laboratories	Director, Corporate Facilities Engineering	MA	Wilmington
Charles River Laboratories Inc.	Facilities Engineer	MA	Stoneham
Chicopee School Department	Energy Manager	MA	Chicopee

Childrens Hospital Boston	Project Manager	MA	Boston
Cimetrics	Analyst	MA	Boston
Cimetrics	Manager Systems Group	MA	Boston
Cimetrics	Controls Engineer	MA	Ipswich
Cimetrics Inc.	HVAC Analyst	MA	Boston
Cimetrics, Inc.	Manager of Services	MA	Amesbury
Cimetrics, Inc.	Chief of Energy Engineering	MA	Boston
Cimetrics, Inc.	Analyst	MA	Boston
Cimetrics, Inc.	Senior Analyst	MA	Boston
Cimetrics, Inc.	Consultant Engineer	MA	Lincoln
City of Cambridge, Dept. of Public Works	Supervisor of Building Systems	MA	Cambridge
Climate Heating & Cooling	Commercial Designer	MA	Pittsburgh
Co-Energy America, Inc.	Sr. Engineer	MA	Southborough
Co-Energy America, Inc.	Sales Manager	MA	Southborough
Co-Energy America, Inc.	Vice President	MA	Southborough
Comfort Express Inc		MA	Plymouth
Comfort Systems USA Energy Services	Project Engineer, LEED AP	MA	Holland
Commonwealth of Massachusetts	Mechanical Engineer	MA	Milton
Compressed Air Technologies, Inc.	Owner	MA	Shutesbury
ConEdison Solutions	Electrical Engineer	MA	Burlington
Conservation Services Group	Program Director	MA	Harvard
Conservation Solutions Corp		MA	Acton
Constellation Energy	Business Development Manager	MA	Lowell
Constellation Energy	Project Developer	MA	Lowell
Constellation Energy	Project Engineer	MA	Lowell
Constellation Energy		MA	Lowell
Constellation Energy	Project Engineer	MA	Sandwich
Constellation Energy Projects	Operations Manager	MA	Lowell
Constellation Energy Projects & Services Group	Business Development Manager	MA	Lowell
Constellation Energy Projects & Services Group	Director of Engineering	MA	Lowell
Constellation New Energy	Manager, Indirect Sales	MA	Boston
Constellation NewEnergy	Program Manager	MA	Boston
Controlyne of New England	President	MA	Framingham
Cookson America, Inc.	HS&E Advisor	RI	Wakefield
Corestaff/Dominion	Control Room Supervisor	MA	Methuen
Coventry Public Schools		RI	Coventry
Covidien	Manager	MA	Mansfield
Crane & Co		MA	Dalton
Cummins Northeast Energy Systems	General Manager	MA	Dedham
CVS/Pharmacy	Project Manager	RI	Woonsocket

Dana Farber Cancer Institute	HVAC Facilities Supervisor	MA	Norwood
Demand Management Institute	President	MA	Needham
Dewberry-Goodkind, Inc.	Mechanical Dept. Group Manager	MA	Boston
Dillon Boiler Services Co., Inc.	Engineer	MA	Fitchburg
DMI	Project Manager	MA	Wellesly Hills
Douglas Controls	Owner	MA	West Boylston
DP Energy Solutions	President	MA	Sharon
Drane Engineering	Owner	MA	Winchester
Duxbury Public Schools	Energy Manager	MA	Duxbury
Dyson Engineering	Principal	MA	East Walpole
ECOSYSTEM Energy Services US	US General Manager	MA	Amherst
EFI Global	Senior Engineer	MA	Longmeadow
EH & E		MA	Needham
Einhorn Yaffee Prescott A/E	Project Director	MA	Northborough
Eirhorn Yaffee Prescott A/E	Engineering Designer/ Energy Analyst	MA	Belmont
Eisai Research Institute	Director of Engineering and Facilities	MA	Andover
EMC Corporation	Systems Supervisor	MA	Hopkinton
EMCOR Facilities Service	Account Manager	MA	Beverly
Emcorp	Engineer	MA	West Roxbury
Emerson College	Director of Facilities Management	MA	Boston
ENE Systems Inc.	Director of Business Development Special Projects	MA	Raynham
Enercon, Inc.	Lighting Designer / Contractor	MA	Sturbridge
Energy & Resource Solutions	Project Engineer	MA	Haverhill
Energy & Resource Solutions	President	MA	Haverhill
Energy & Resource Solutions (ERS)	Vice President of Technology	MA	Haverhill
Energy & Resource Solutions, Inc.	Senior Project Engineer	MA	Haverhill
Energy & Resources Solutions	Project Engineer	MA	Haverhill
Energy & Resources Solutions, Inc.	Senior Project Engineer	MA	Haverhill
Energy Conservation Inc	President	MA	Hanson
Energy Logic, Inc	Energy Consultant	MA	Dennisport
Energy Machinery, Inc	Engineer	MA	Rockland
Energy Management Associates	Principal Engineer	MA	Franklin
Energy Management International		MA	Seekonk
Energy Plus	Owner	MA	Hudson
Energy Resources Associates, LLC	VP Business Development	RI	Westerly
Energy USA		MA	Westborough
Energy USA		MA	Westborough
EnerNoc	Business Development	MA	Lynnfield
EnerNOC, Inc	Director of Customer Operations	MA	Boston

EnerNOC, Inc.	Senior VP Marketing and Sales	MA	Boston
EnerNoc, Inc.	Director of Energy Services	MA	Boston
EnerNOC, Inc.	Sr. Manager, Demand Side Services	MA	Boston
EnerNOC, Inc.	Project Manager	MA	Boston
EnerNOC, Inc.	Sr. Director of Operations	MA	Boston
EnerNoc, Inc.	Energy Services Analyst	MA	Boston
EnerNOC, Inc.	Senior Business Development Manager	MA	Boston
EnerNOC, Inc.	Energy Services Analyst	MA	Cambridge
EnerNOC.	Sr. Energy Analyst	MA	Boston
Engineered Solutions Inc.	Principal	MA	Natick
Environment Health & Engineering		MA	Needham
Environmental Compliance Services Inc.	Principle Engineer	MA	Agawam
Environmental Health & Engineering	Commissioning Program Manager	MA	Needham
Environmental Health & Engineering	Associate	MA	Needham
Environmental Health & Engineering, Inc.	Staff Engineer	MA	Needham
Environmental Health and Engineering	Senior Engineer	MA	Needham
Environmental Systems Corp.	Energy Manager	MA	Winchester
EPA, Region I	Environmental Engineer	MA	Boston
Equity Office Properties		MA	Boston
Facilities Resource Mgmt Co		MA	Westborough
FMC Technologies Inc.	President	MA	Billerica
Framingham State College	Staff Associate, Power Plant Operations	MA	Framingham
Frank I Rounds Co		MA	Randolph
General Dynamics	M & O Manager	MA	Needham
General Services Administration	Mechanical Engineer	MA	Billerica
George T. Wilkinson Co, Inc	V.P. of Sales	MA	East Weymouth
Gilbane	Project Manager	MA	Hampden
Global Montello Group	Manager, Natural Gas/Electric Marketing	MA	Pittsfield
Global Montello Group Corp	Industrial Fuels Sales & Pricing Manager	MA	Waltham
Goodrich Corporation	Facilities Manager	MA	Chelsford
H2O Applied Technologies LLC	Project Engineer	MA	Boston
H2O Applied Technologies	Senior Mechanical Engineer	MA	Boston
H2O Applied Technologies	Project Engineer - Measurement & Verification	MA	Cambridge
Hallam-ICS	Electrical Engineer	RI	Foster
Harrah's Entertainment	Director, Energy Services	MA	Middleborough
Harry Grodsky & Co. Inc.	Lead Designer	MA	Springfield

Harvard Office for Sustainability	Assistant Director	MA	Cambridge
Harvard School of Public Health	Energy & Utilities Mgr	MA	Boston
Harvard University	Supervisor of Technical Services	MA	Needham
Harvard University-FAS	Senior Facility Manager	MA	Cambridge
Hess Corporation	Regional Account Manager	Ma	Westfield
Hill Energy Services	Principal	MA	Needham
Honeywell		MA	Seekonk
Hyatt Regency Cambridge	Director of Engineering	MA	Cambridge
ICF International	Senior Manager	MA	Mattapoisett
ICF International	Senior Associate	MA	Newburyport
Innovative Building Solutions	Engineer	MA	Plymouth
Inspection Services Inc.	Associate Director	MA	Abington
Invensys ENE, Inc.	Special Projects Manager	MA	Canton
lpower		MA	Boston
J. Chavier	Engineer	MA	Pepperell
Johnson Controls		MA	Hanover
Johnson Controls	Solutions Development Leader	MA	Lynnfield
Johnson Controls	Principal	MA	N Easton
Johnson Controls Inc.	Senior Project Manager	MA	Braintree
Johnson Controls, Inc.	Project Development Engineer	MA	Arlington
Johnson Controls, Inc.	Senior Performance Assurance Engineer	MA	Lynnfield
Johnson Controls, Inc.	Sr. PAE	MA	South Hadley
Jones Lang LaSalle	Regional Engineer	MA	Boston
Jones Lang LaSalle		MA	Boston
KeySpan Energy Delivery	Lead Account Executive	MA	Waltham
Kilojolts Consulting Group, Inc.	President	MA	Lexington
Kilojolts Consulting Group.	Analyst	MA	Brighton
KlingStubbins	Project Coordinator	MA	Boston
Kraft Foods	Engineering Manager	MA	Woburn
Kraft Foods	Senior Engineer Electrical Power	MA	Woburn
Lahey Clinic		MA	Burlington
Lahey Clinic		MA	Burlington
Lenox American Saw & Mfg. Co.	Facilities Engineer	MA	East Longmeadow
LENOX, American Saw & Mfg Co	Plant Engineering Manager	MA	East Longmeadow
LFR Inc.		MA	Plymouth
Liberty Mutual	Facilities Project Manager	MA	Marshfield
Linc Mechanical Services	Account Executive	MA	Woburn
Lincoln Public Schools		MA	Lincoln

Livable Planet Solutions, LLC.	Owner	RI	North Smithfield
Maine Maritime Academy	Associate Professor	MA	Castine
Management Alternatives LTD.	Consultant	MA	North Grafton
Marine Biological Laboratory	POM Manager	MA	Woods Hole
Marine Biological Laboratory		MA	Woods Hole
Mass Maritime	Student	MA	E. Falmouth
Mass Maritime Academy	Student	MA	Buzzards Bay
Mass. Maritime Academy	Student	MA	Buzzards Bay
Mass. Maritime Academy		MA	Seekonk
Massachusetts Institute of Technology/Facilities	Manager of Sustainable Eng. & Utility Planning	MA	Cambridge
Massachusetts Technology Collaborative	Project Manager	MA	Westborough
MassMutual Financial Group	Director of Engineering	MA	Longmeadow
Massport	Facilities Manager	MA	Stoneham
May Indoor Air Investigations LLC	President	MA	Tyngsborough
McCormick Allum Co Inc		MA	Springfield
McKinley Energy Resources		MA	Shrewsbury
McLean Hospital	Director of Facilities	MA	Belmont
Mech. Eng. Dept., University of Massachusetts	Doctoral Candidate	MA	Westport
Megdal & Associates	Project Manager	MA	Boxborough
Meter Engineering Co., LLC	President	MA	Norfolk
Millipore Corp.	Regional Facilities Manager	MA	Bedford
Mirant Canal LLC	Sr. Plant Engineer	MA	Sandwich
MIT	Student	MA	Cambridge
MMA	Student	MA	Fall River
Nashoba Regional School District	Director of Facilities Management	MA	Bolton
National Grid	Principal Energy Efficiency Consultant	MA	Attleboro
National Grid	Principal Energy Efficiency Consultant	MA	Boxford
National Grid	Account Manager	MA	Brockton
National Grid	Principal Tech Support Consultant	MA	Hopkinton
National Grid	Principal Technical Support Consultant	MA	Leominster
National Grid	Energy Efficiency Consultant	MA	Leominster
National Grid	P.E.	MA	North Andover
National Grid		MA	Northborough
National Grid	Senior Program Manager	MA	Seekonk
National Grid	Senior Energy Engineer	MA	Waltham
National Grid	Lead Engineer	MA	Waltham
National Grid	Lead Program Manager	MA	Waltham
National Grid	Transmission Account Manager	MA	Westboro

National Grid		MA	Westborough
National Grid	Lead Account Executive	MA	Worcester
National Grid	Principal Technical Support Consultant	MA	Worcester
National Grid	Account Executive	RI	Providence
National Grid	Key Account Manager	RI	Providence
National Grid USA	Lead Analyst	MA	Waltham
National Grid/ Energy Efficiency Dept.	Principial Analyst	MA	Northborough
Navigant Consulting, Inc.	Director	MA	Burlington
Navigant Consulting, Inc.		MA	Burlington
Nelson Mechanical Design	Owner	MA	Vineyard Haven
New England Finanacial		MA	Boston
New York Institute of Technology	Student	MA	Pelham
Nexamp, Inc.	President	MA	North Andover
Noresco	Senior Energy Engineer	MA	Acton
Noresco	Energy Engineer	MA	Auburn
NORESICO	Energy Engineer	MA	Boston
NORESICO	Director-Performance Engineering	MA	Boston
NORESICO	Energy Engineer	MA	Boston
Noresco	Manager - Performance Engineering	MA	Boston
Noresco	Director	MA	Florence
Noresco	Energy Engineer	MA	Westborough
Noresco	Director of Engineering	MA	Westborough
Noresco	Sr. Project Manager-Commissioning	RI	North Scituate
Northeast Utilities	Program Administrator	MA	Hampden
Northeastern University	Clerk	MA	Boston
Northeastern University	Assistant Utilities Manager	MA	Boston
Northeastern University	Utilities Manager	MA	Boston
Northern Energy Services	President	MA	Northborough
Northern Energy Services	Vice President	MA	Northborough
Notch Mechanical Constructors	President	MA	Chicopee
Novar	Sr. Systems Consultant	MA	Newburyport
NSTAR	Gas Sales Rep	MA	Dedham
NSTAR	Program Manager/Energy Efficiency	MA	Westwood
NSTAR Electric & Gas	Program Manager	MA	Westwood
Nstar Electric & Gas	Account Executive	MA	Westwood
NSTAR Electric & Gas Corp.	Senior Engineer	MA	Marshfield
NSTAR Electric & Gas Corp.	Project Engineer	MA	Westwood
NSTAR Electric & NSTAR Gas	Program Mgr.	MA	Westwood
NSTAR Electric and Gas	Program Manager, Technical Gas	MA	Westwood

NSTAR Electric Gas Corp.	Team Manager, Volume Sales	MA	Westwood
NSTAR SUM.SW 340		MA	Westwood
Onset Computer Corporation	Product Marketing Manager	MA	Pocasset
Organizational System Consultant		RI	Warwick
Pace Global Energy Services	Vice President-Applied Technology	RI	North Kingstown
PAF Engineers	Senior Engineer	MA	Feeding Hills
Partners Health Care System	Director of Utilities and Engineering	MA	Boston
Partners HealthCare System, Inc.	Utilities Manager	MA	Woburn
PB Power	Marketing Manager	MA	Boston
PCC	Energy Manager	MA	Hopkinton
Pepco Energy Services, Inc.	Regional Energy Manager	MA	Rochdale
Phillips Academy	Manager of Electrical & Mechanical Maintenance	MA	Andover
Phoenix Controls	Product Manager	MA	Acton
Powercell Corporation	VP, Marketing & Sales	MA	Wellesley Hills
Powercell Corporation	Director, Application Engineering	MA	Wellesley Hills
Providence Gas Co		RI	Providence
R P O'Connell, Inc.	Control Manager	MA	Natick
Raytheon Co.	Sr. Multi-Disciplined Engineer I	MA	Billerica
Raytheon Company	Senior Energy Engineer	MA	Billerica
Raytheon Company	Senior Facilities Mechanical Engineer	RI	Portsmouth
Reit Management & Research LLC	National Director of Engineering	MA	Watertown
Resource & Energy Consulting	Owner	MA	North Andover
RISE Engineering	Senior Engineer	MA	Springfield
RISE Engineering	Energy Specialist	MA	West Newton
RISE Engineering	Account Manager	RI	Cranston
RISE Engineering	Director of Business Development	RI	Cranston
RISE Engineering	Energy Engineer	RI	Cranston
Risk Services Group, Inc.	Chief Operating Officer	MA	Shrewsbury
RMF Engineering	Project Manager	MA	Danvers
Ryan Law Offices	Attorney	MA	Boston
Sappi Fine Paper North America		MA	Boston
Sebesta Blomberg & Assoc.	Project Engineer	MA	Boston
Sebesta Blomberg New England, Inc.	President	MA	Woburn
Select Energy Services, Inc.	President	MA	Framingham
SGE Group	Operations Manager	MA	Hopedale
SHG	Project Manager	MA	Waltham
Siemens	Energy Engineer	MA	Canton
Siemens	Engineer	MA	North Oxford
Siemens Building Technologies	Energy Services Manager	MA	Canton

Siemens Building Technologies	Project Manager/Developer	MA	Canton
Siemens Building Technologies	Region Business Manager	MA	Canton
Siemens Building Technologies	Energy Engineer	MA	Canton
Siemens Building Technologies	Energy Engineer	MA	Canton
Siemens Building Technologies	Sales Team Leader	RI	Coventry
Siemens Building Technologies	Engineering Specialist	RI	Cranston
Smith & Wesson Corporation		MA	Springfield
SMMA	Principal/Mechanical Engineering	MA	Cambridge
Source One		MA	Plainville
Stonehill College	Director of Facilities Management	MA	Easton
Stonehill College	Assistant Vice President, Facilities Management	MA	Easton
Suez Energy Resources	Sales Manager	MA	Boston
Suffolk University	Manager, MEP Facilities	MA	Stoneham
SunCredits	Principal	MA	Waltham
Symmes, Maini & McKee Associates	Mechanical Department Manager	MA	Cambridge
Synergy Investment		MA	Westborough
Synergy Investment		MA	Westborough
T.A. Schnare & Associates	Consultant	MA	Sterling
TAC	Director, Business Development	MA	North Andover
TAC Americas	Sr. Project Manager	MA	Arlington
Taunton Municipal Light Plant	Manager Customer Care	MA	Taunton
Taunton Municipal Light Plant	Energy Supply Dept. Mgr.	MA	Taunton
Taunton Municipal Lighting Plt	Customer Core Administrator	MA	Taunton
Tecogen	Regional Sales Manager	MA	Waltham
Tetra Tech NUS	Environmental Engineer	MA	Wilmington
Thane D. Yorke & Company	President	MA	Cheshire
The Berkshire Gas Co	Manager, Energy Services	MA	Pittsfield
The Ferreira Group	Sr. Project Manager - MEP Services	MA	Rockland
The Watt Stopper, Inc.	Eastern Region Sales Manager	MA	Seekonk
Tighe & Bond Consulting Engr		MA	Westfield
Tighe and Bond Consulting		MA	Westfield
Town of Danvers Electric Division	Power Supply Engineer	MA	Saugus
Trane	Sales Engineer	MA	Lowell
Trane	Energy Engineer	MA	Woburn
Trigen Boston	Manager, Sales and Marketing	MA	Natick
Trigen Boston Energy Corp.	Engineer	MA	Boston
Trigen Boston Energy Corp.	Director of Distribution and Project Services	MA	Cohasset
Tunstall Assoc., Inc.	Owner	MA	Chicupee
U.S. Coast Guard Civil Engineering Unit	Executive officer	RI	Warwick

Providence			
Umass Boston	Manager of Utilities	MA	Boston
Umass Lowell	Student	MA	Lowell
UNICCO	Director of Technical Services	MA	Auburndale
United Technologies Carrier	Engineer	MA	Canton
Univ of MA Medical School		MA	Worcester
Univ of Massachusetts/Amherst	Director, Physical Plant	MA	Amherst
University of Massachusetts Amherst		MA	Amherst
UTS Energy Engineering, LLC	President	MA	Quincy
VA Boston Healthcare System	General Engineer	MA	Boston
VA Boston Healthcare System		RI	West Warwick
Veolia Energy	Vice President of Engineering	MA	Dighton
Veolia Energy NA	Technical Development Manager	MA	Maynard
Wentworth Institute of Technology	Electrical Coordinator	MA	Boston
Wentworth Institute of Technology	Assistant Director Energy Management	MA	Lowell
Wentworth Institute of Technology	Student	MA	Roxbury
Westfield Gas & Electric	Chief Business Officer	MA	Westfield
Whole Foods Market, Inc.	Director, Energy and Environmental Management	MA	Cambridge
William J. Peterson, Jr.	Sales Engineer	RI	Glendale
Worcester Housing Authority	Energy Conservation Consultant	MA	Worcester
World Energy	Account Manager	MA	Worcester
World Energy	Market Analyst	MA	Worcester
World Energy	Vice President, Channel Sales	MA	Worcester
World Energy	Vice President	MA	Worcester
World Energy	Market Director	MA	Worcester
World Energy Solutions	Market Director	MA	Worcester
WSP Flack + Kurtz	Senior Associate	MA	Boston
Wyeth Biotech	Manager, Mechanical Systems Engineering	MA	Byfield

Copyright 2009 Association of Energy Engineers

Permission granted to reprint portions of this report provided the following credit /link appears:

*Re-printed by Permission of the Association of Energy Engineers (AEE)*

<http://www.aeecenter.org>